

# WAY-2-SEAL

Manufactured by **SLADE**

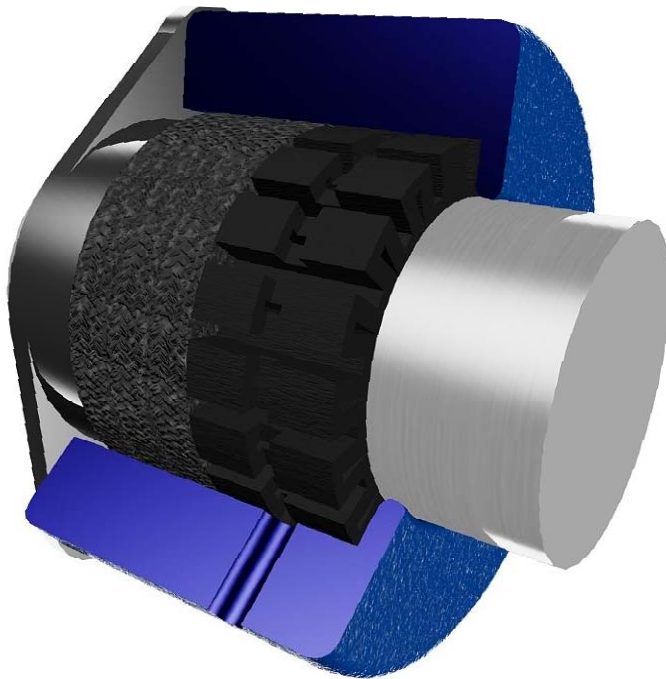


**WAY - 2 - SAVE**

**WAY - 2 - LOWER EMISSIONS**

**WAY - 2 - REDUCE AMPERAGE**

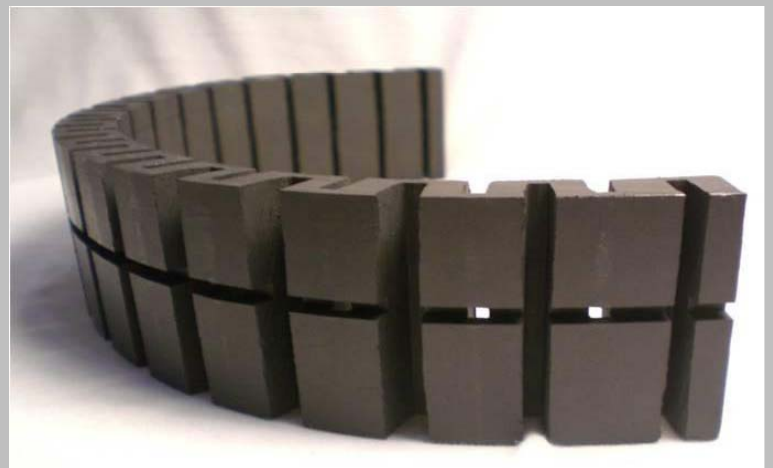
**WAY - 2 - SEAL**

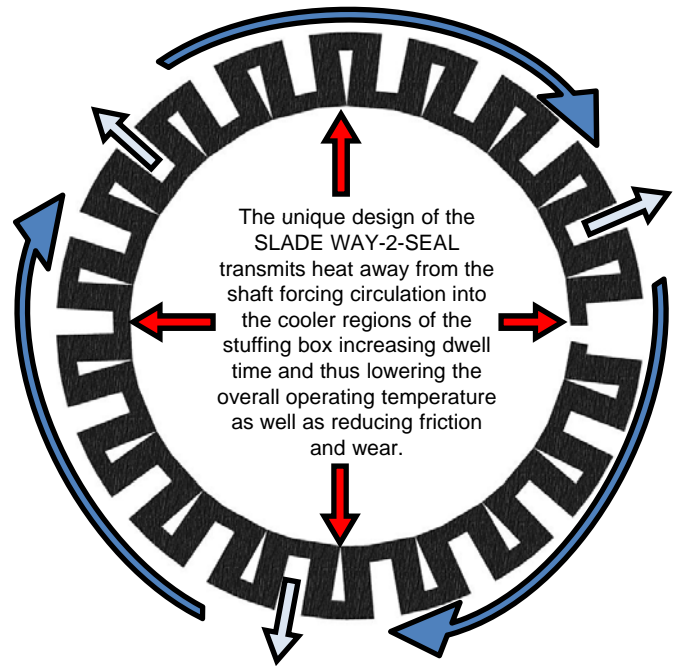
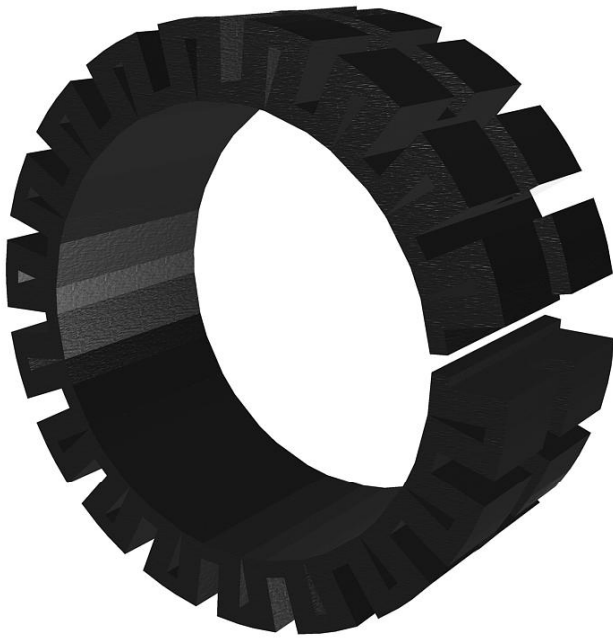


**Contact SLADE  
for  
standard sizes  
and  
availability**

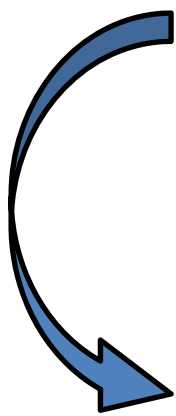
THE WAY-2-SEAL

- ELIMINATES THE NEED FOR A LANTERN RING
- REDUCES THE AMOUNT OF PACKING REQUIRED
- LOWERS THE AMPERAGE NEEDED TO RUN THE PUMP

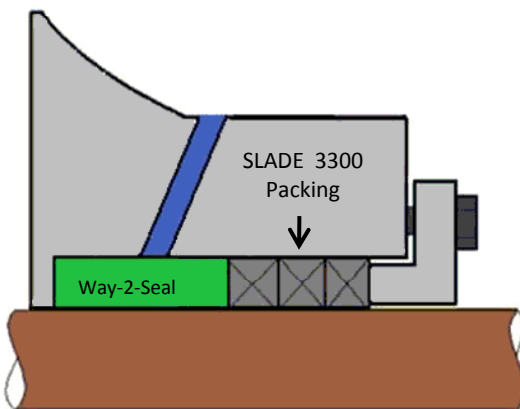




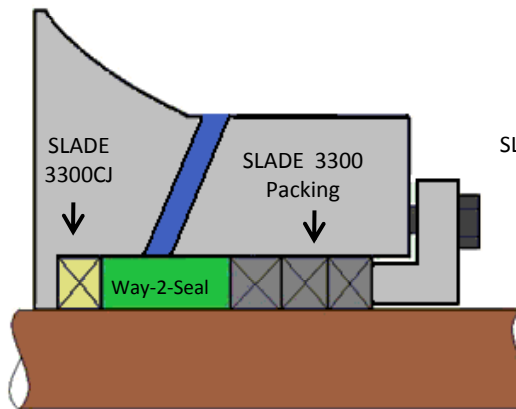
## HOW CAN THE WAY-2-SEAL SOLVE YOUR SEALING PROBLEMS ?



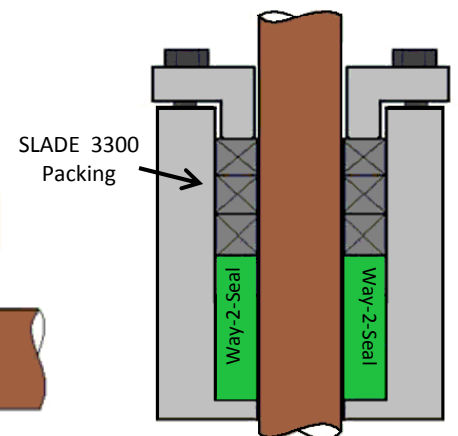
- COOLING BENEFITS REDUCE FRICTION AND WEAR
- EXCELLENT FOR SLURRY PUMP APPLICATIONS
- ELIMINATES THE NEED FOR LANTERN RINGS AND EXPENSIVE MACHINED BUSHINGS
- CAN BE USED IN VALVES TO SHORTEN THE STUFFING BOX AND REDUCE THE NUMBER OF PACKING RINGS
- EXTREMELY SIMPLE INSTALLATION
- ABLE TO WITHSTAND TEMPERATURES UP TO 315°C / 600°F
- CAN EFFECTIVELY BE USED TO LOWER EMISSIONS IN VALVE APPLICATIONS
- CAN BE MADE TO FIT ANY SIZE SHAFT AND STUFFING BOX
- RESISTANT TO THE MOST ABRASIVE MEDIAS
- GREATLY REDUCES FRICTION AND AMPERAGE DRAW
- TAKES ADVANTAGE OF "DELTA P" BENEFITS
- CAN BE RUN FLUSH FREE IN NON-ABRASIVE MEDIAS



TYPICAL SLURRY PUMP ARRANGEMENT



OPTIONAL SLURRY PUMP ARRANGEMENT



VALVE ARRANGEMENT

For pricing information contact:

INSERT DISTRIBUTOR  
LABEL HERE



181 Crawford Rd. Statesville, NC 28625  
 Website: [www.slade-inc.com](http://www.slade-inc.com)  
 Email: [sales@slade-inc.com](mailto:sales@slade-inc.com)  
 Phone: 704-873-1366  
 Fax: 704-873-1399